

MOVING HOMES

SALES & LETTINGS



Offers Over £150,000

Crossley Terrace, Newcastle Upon Tyne

Offers Over £150,000

Moving Homes are delighted to welcome to the market for sale this three bedroom mid terraced house on Crossley Terrace in Palmersville. With its central location and local amenities such as shops, supermarkets, Primary School and Palmersville Metro Station only a short distance away. This property would make a lovely family home and must be viewed in order to appreciate what it has to offer.

Briefly comprising of: - entrance porch leading to inner hallway and stairs leading to first floor. The spacious living room is to the front of the property with large bay window allowing the light to flood in, chimney breast to main wall with alcoves to sides. The breakfasting kitchen is to the rear and has a range of wall and base units complementing work tops. There is also a handy laundry room with wc ideal for family living. To the first floor there are three double bedrooms and a family bathroom which boasts, walk in shower cubicle, bath, hand wash basin, wc and bidet. Externally to the front there is a mature garden with on street parking and to the rear a private yard with up and over garage door and brick storage room.

To secure a viewing please contact Moving Homes on 0191-2964600 or visit our website movinghomesuk.com

EPC Rating <https://find-energy-certificate.service.gov.uk/energy-certificate/4032-0721-4200-0861-0222>

Tenure - The agent understands the property to be freehold. However, this should be confirmed with a licensed legal representative.

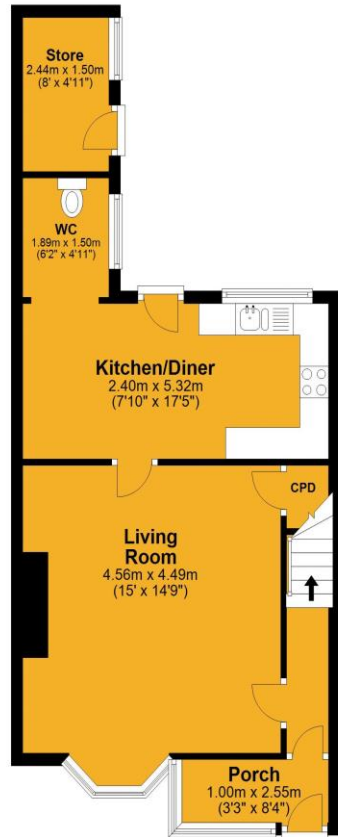
Council Tax Band - A

Covid 19 Viewing Guidelines For the safety of our clients, yourselves and our staff we are currently only allowing viewings to go ahead if viewers wear appropriate PPE (masks and gloves). Social distancing rules must also be adhered to at all times. Where possible we will encourage vendors to leave the property while the viewing is going ahead. We also will only allow 2 people to view a property at any one time.



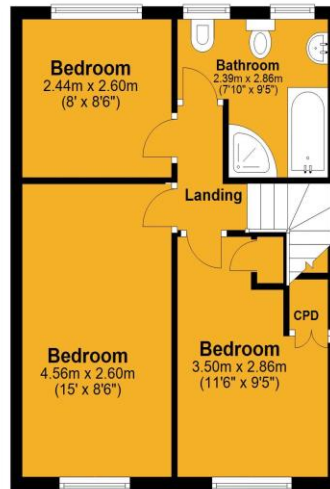
Ground Floor

Approx. 47.4 sq. metres (509.7 sq. feet)



First Floor

Approx. 37.9 sq. metres (408.1 sq. feet)



Total area: approx. 85.3 sq. metres (917.8 sq. feet)



Score	Energy rating	Current	Potential
92+	A		
81-91	B		86 B
69-80	C	70 c	
55-68	D		
39-54	E		
21-38	F		
1-20	G		



Tel: 0191 2964600 E: info@movinghomesuk.com www.movinghomesuk.com
2A Hawkeys Lane North Shields Tyne & Wear NE29 0JF